

AURA

Installation Manual

Model: AFADI01S
Faucet

Aura Single Hole Lavatory Faucet

Installation Manual

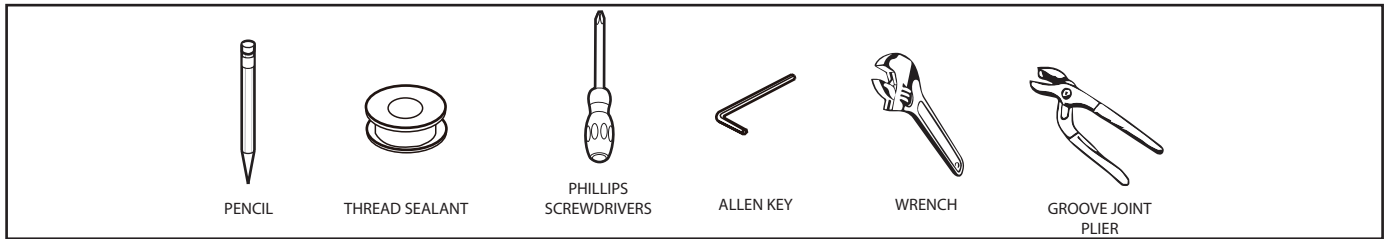


Please read notices on following page

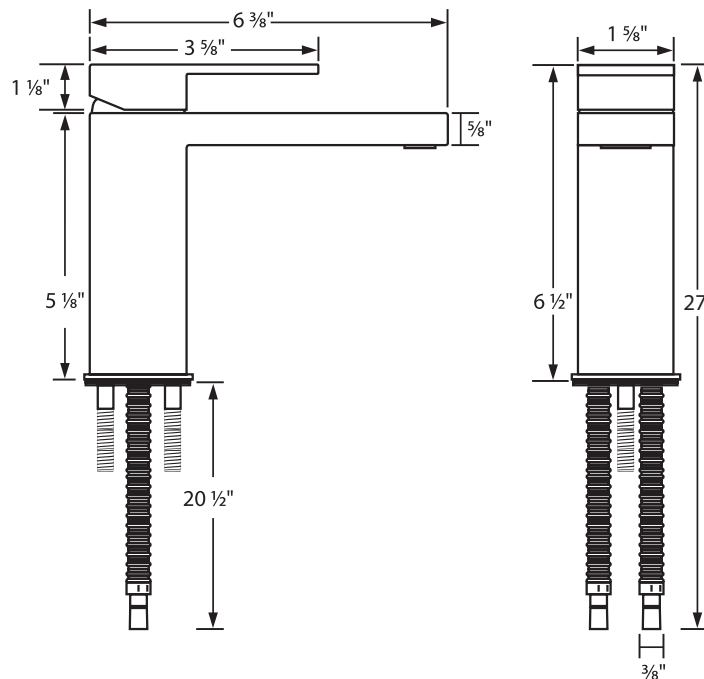
PRODUCT SPECIFICATIONS ARE SUBJECT TO CHANGE WITHOUT NOTICE.

Dimensions of fixtures are approximate and may vary $\pm 6\text{mm}$ (1/4"). Structure measurements must be verified against the unit to ensure proper fit.

Materials and Tools Required



Important Measurements



GENERAL INSTRUCTIONS

- Read this guide carefully and completely before proceeding.
- It is recommended that you wear safety glasses during the installation.

NOTICE

- For best results, we recommend that a licensed, professional plumber installs this unit.
- Please read over these instructions thoroughly before beginning installation.
- Make sure that you have all tools and supplies needed to complete the installation.
- Please check local building code.
- **IF SOLDERING, REMOVE CARTRIDGES TO PREVENT DAMAGE**
- Keep receipts (proof of purchase and place of purchase) for this product. The receipt is required should it be necessary to request warranty parts.

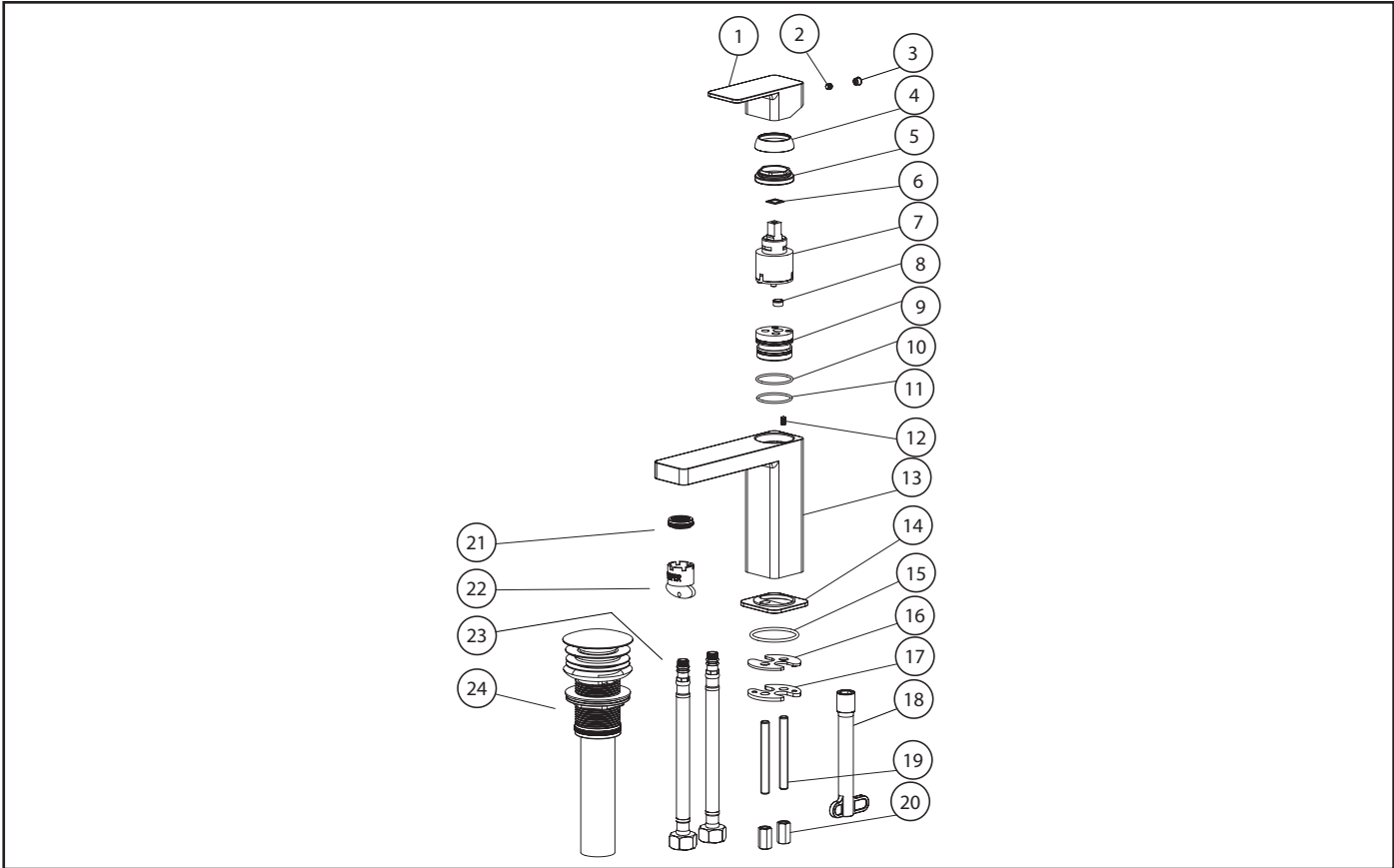
MAINTENANCE & CARE FOR YOUR AURA PRODUCTS

- To clean your faucet or accessory, when necessary, wash with a nonabrasive wet soapy cloth. Then wipe dry with a soft towel or cloth.
- Do not use any abrasive chemical or corrosive powders, detergents, window cleaners, disinfectants or any other strong cleaners on your Product as they will destroy the finish and therefore void the warranty

REMOVAL OF FAUCET

- Always turn the water supply off before removing the existing faucet or disassembling a faucet.
- Ensure the water has been turned off.

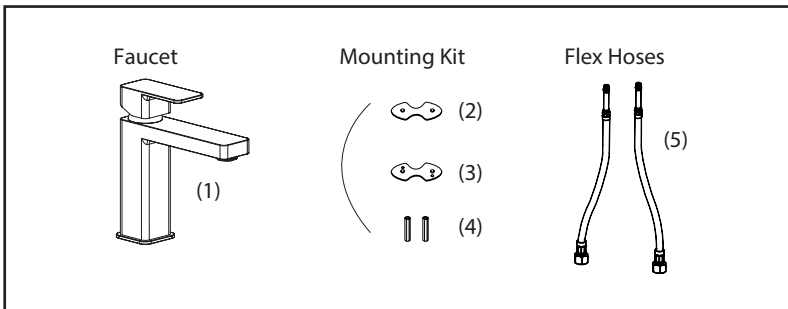
Parts List



| ITEM | DESCRIPTION | SKU | QTY |
|------|------------------|-----|-----|
| 1 | Handle | | 1 |
| 2 | Set Screw | | 1 |
| 3 | Cap | | 1 |
| 4 | Cartridge Cover | | 1 |
| 5 | Retaining Nut | | 1 |
| 6 | Washer | | 1 |
| 7 | Cartridge | | 1 |
| 8 | Regulator (6L) | | 1 |
| 9 | Cartridge Holder | | 1 |
| 10 | O'Ring | | 1 |
| 11 | O'Ring | | 1 |
| 12 | Set Screw | | 1 |
| 13 | Mixer Body | | 1 |

| ITEM | DESCRIPTION | SKU | QTY |
|------|----------------------|-----|-----|
| 14 | Base | | 1 |
| 15 | O'Ring | | 1 |
| 16 | Rubber Washer | | 1 |
| 17 | SS Washer | | 1 |
| 18 | Spanner | | 1 |
| 19 | Rod Bolt | | 2 |
| 20 | Fixing Nut | | 2 |
| 21 | Aerator | | 1 |
| 22 | Aerator Key | | 1 |
| 23 | Flexible Hose (CUPC) | | 2 |
| 24 | Drain with Overflow | | 1 |
| 25 | | | |
| 26 | | | |

Faucet Installation



ATTENTION!

TIGHTEN HOSES BY HAND ONLY

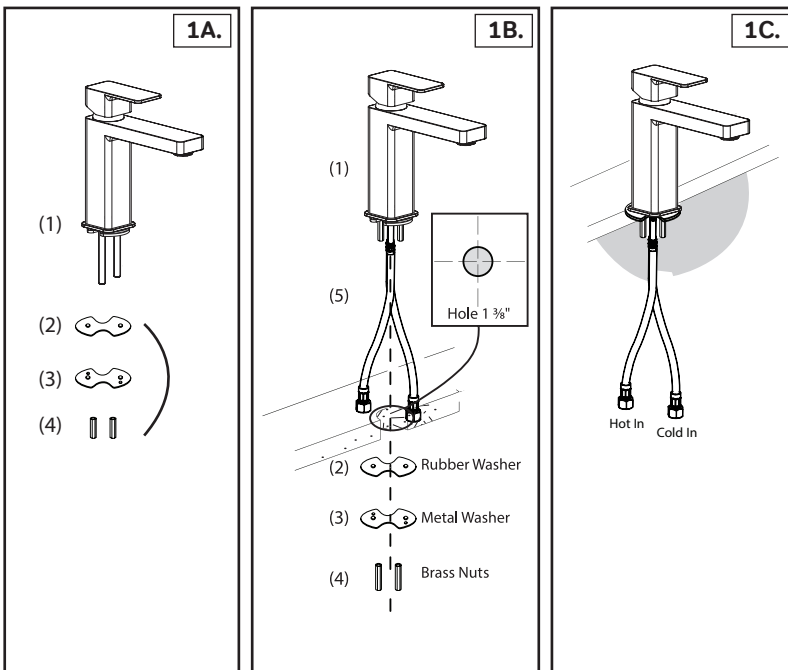
1A. Remove the mounting kit below the **Faucet (1)**

If Not already attached, attach both flex hoses to the faucet (hand tighten only).

1B. Insert **Flex Hoses (5)** through the hole of your sink or countertop, then place the faucet inserting the threaded end in your sink or countertop.

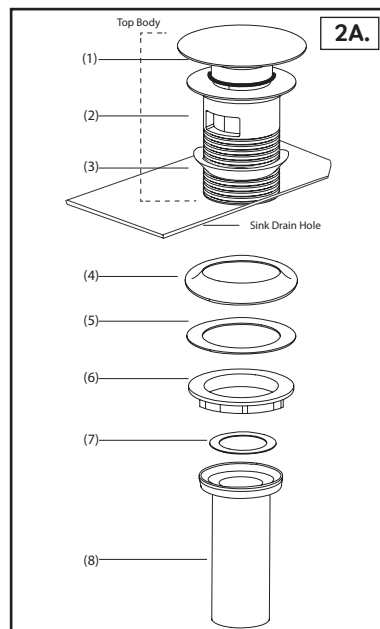
Insert the **Rubber Washer (2)**, the **Metal Washer (3)** and secure the **Faucet (1)** with the **Brass Nut (4)**.

1C. Connect the hot and water hoses to the inlet shut off valves.



- (1) Faucet
- (2) Rubber Washer
- (3) Metal Washer
- (4) Brass Nuts
- (5) Flex Hoses

Drain Installation



- (1) Pop-Up Drain
- (2) Drain
- (3) Curved Rubber Washer
- (4) Bowl Rubber Washer
- (5) Plastic Washer
- (6) Brass Hexagonal Nut
- (7) Rubber Washer
- (8) Bottom Tube

2A. Unscrew the **Bottom Tube (8)** and remove the **Brass Hexagonal Nut (6)**, and the **Plastic Washer (5)**.

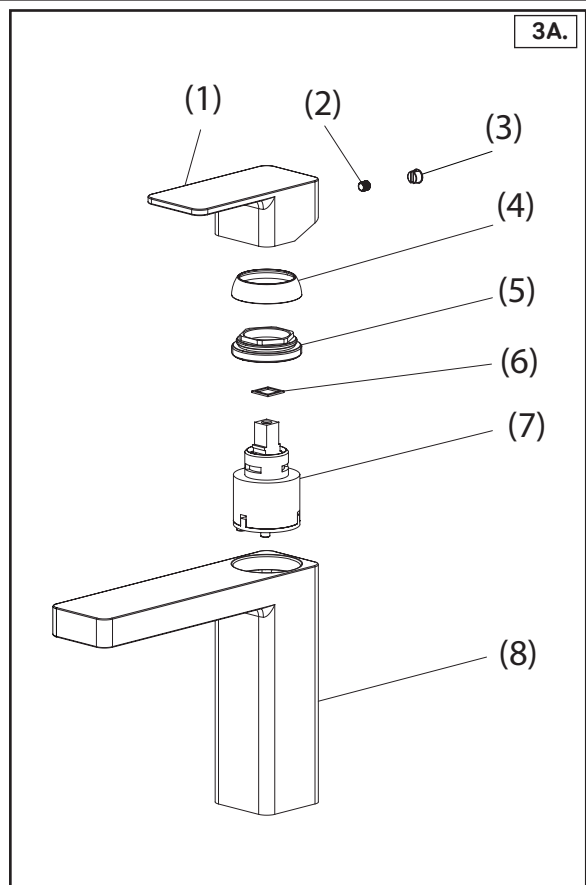
Insert the top body of the drain: **Pop-Up Drain (1)**, **Drain (2)**, **Curved Rubber Washer (3)** into the hole of the sink.

Reinsert the **Curved Rubber Washer (4)** and the **Brass Hexagonal Nut (6)** below the sink.

Tighten firmly without putting pressure on the sink.

Screw the **Bottom Tube (8)** back on.

Cartridge Repacement



3A. Shut off the water supply lines and then pull **Handle (1)** to turn the water on so it drains the **Faucet (8)**.

To replace the **Cartridge (7)** remove the **Cap (3)** that covers the **Set Screw (2)** and loosen the **Set Screw (2)**.

Pull the **Handle (1)** off the **Faucet (8)**.

Untighten the **Cartridge Cover (4)** covering the **Retaining Nut (5)**, and then unscrew the **Retaining Nut (5)** which holds the **Cartridge (7)** into place.

Note the Orientation of the old cartridge, to place a new cartridge in the same position.

Pull the old **Cartridge (7)** out and replace with a new one. Align the bottom pins on the Cartridge to fit into holes in the **Faucet (8)**.

- (1) Handle
- (2) Set Screw
- (3) Cap
- (4) Cartridge Cover
- (5) Retaining Nut
- (6) Washer
- (7) Cartridge
- (8) Faucet